

Enhanced Real-Time Trace

8051 and 68HC11

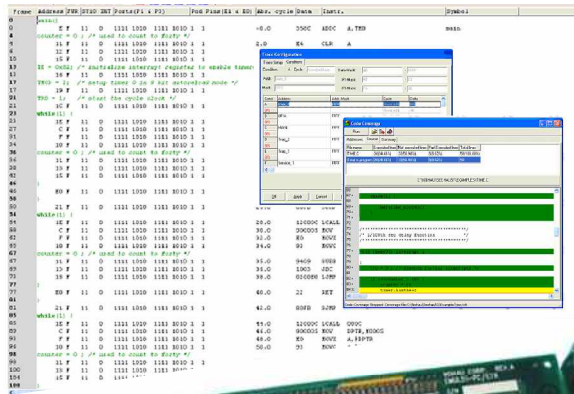
Plug in real-time triggered trace to your Nohau emulator system at any time to speed debugging and enhance target program performance.

The real-time trace provides useful programming and debugging feedback so that you can optimize your program and get the most out of target hardware. The trace is a 256 K-frame FIFO that saves code execution data without effecting your target's performance in any way. Seehau trace software includes performance analysis and code coverage to fully realize the potential of your hardware, and to verify firmware quality.

Logic defying problems can be far easier to isolate and solve using the multi-level event triggering. 8-Level triggering can be used in Boolean statements that provide the precision to home in on difficult to isolate problems residing deep within a convoluted program thread or iterative processes.

Real-Time Trace Benefits:

- Easier debugging and code enhancement.
- Deep data trace records 256,000 clocks of real-time execution with event search functions.
- Trace does not effect target program execution.
- Trigger on data read or write, external bits, port values, opcode execution, loops, interrupts, value ranges, and more.
- Menu driven complex triggering capability using Boolean operators.
- Each of the 8 levels have a 6 bit state machine
- Trigger conditions may be viewed and set while the target code is running.
- The trigger point may be set to appear anywhere within the trace record.
- Banking aware program trace is supported
- 32 Bit event time stamp with 16 bit prescaler
- Operates up to 50 MHz target clock frequency
- View data writes in real-time in many data formats including HEX, ASCII, binary, graphic, and more



8051 Code Coverage

Displays memory areas accessed in the following modes:

- Program code fetch access
- Program memory first byte fetch
- Read cycles from XDATA memory
- Write cycles to XDATA memory

68HC11 Code Coverage

Displays memory in the following modes:

- All memory accesses
- Instruction fetch (LIR active)
- Read cycles
- Write cycles

NOHAU^(tm)
by ICE Technology

USA 800.686.6428 – Int. 650.375.0409
sales@icetech.com – www.icetech.com

Nohau and Seehau are trademarks of ICE Technology all rights reserved.