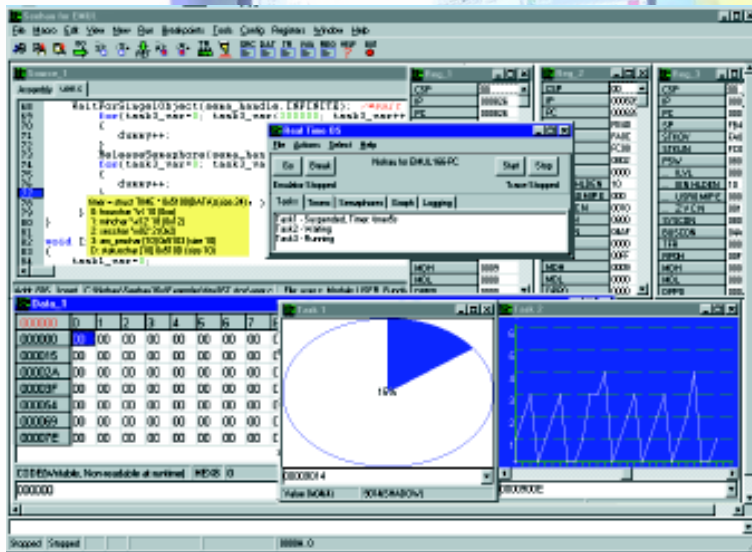


EMUL166-OCDS-PC

Debugger for Infineon OCDS Microcontrollers



Key Benefits

- ◆ Supports the Infineon C166 family devices incorporating OCDS.
- ◆ C161U and C165UTAH are the first to be supported.
- ◆ Other devices are being developed continuously.
- ◆ Real-time operation to the full speed of the target controller.
- ◆ Full Infineon Level 1 OCDS specification is used for transparent single-chip or external mode emulation.
- ◆ Connects to your target with a standard LPT 25 pin D shell or the Infineon specified 16 pin header.
- ◆ Advanced macro scripting language is easy to use and configure.
- ◆ Connects through your LPTx port. Portable laptop operation.
- ◆ Monitor code can be placed in RAM or FLASH or linked into your code. You can specify where in RAM you want it placed.
- ◆ RESET values for SYSCON and BUSCONx are easily set with a Seehau register window. Make multiple settings for easy recall.
- ◆ Seehau OCDS is compatible to the full C166 emulator Seehau. Transition from one system to the other is effortless.
- ◆ OCDS Level 2 functions can be added later as released.
- ◆ Seehau OCDS is developed and Made in the USA.
- ◆ Seehau 32 Bit GUI: Windows 95/98/NT and 2000.

Product Description

Nohau adds OCDS support to its C166 family of full in-emulators. Seehau uses the Level 1 OCDS (On Chip Debugging Support) specification to provide transparent debugging through the Infineon microcontroller's JTAG port. OCDS Level 2 support will be implemented to Seehau OCDS for future Infineon parts.

Nohau C166 emulators are true real-time performers. Your code is not slowed down by cycle stealing by the Seehau debugger.

Nohau also makes full feature emulators for the regular C166 family.

Hardware and Software Breakpoints

Unlimited software breakpoints are offered as well as the three hardware breakpoints offered by the OCDS. You can set breakpoints by merely clicking in the source window and these can be temporarily "parked" for easy recall. Hardware breakpoints are useful for debugging in ROM. Both types of breakpoints are no-skid and do not execute the instruction they are set to.

Devices Supported

The C161U and C165UTAH are supported today. New derivatives will be supported as they are released by Infineon. There is a continuous development process at Nohau to add these devices quickly so you can begin your debugging as soon as possible after you have selected your target chip.

Internal and External Modes

The OCDS specification provides for emulation for both ROM and ROMless devices (single-chip and external modes). The C161U and C165 UTAH devices are both ROMless but if Infineon release new OTP or FLASH devices that use the single-chip mode of operation, Nohau and OCDS is ready to provide real-time debugging power.

Call Nohau today for your local representative or visit our website at www.nohau.com for further information.

www.nohau.com



Cut Development Time

Nohau

275 E. Hacienda Avenue
Campbell, California 95008

Email: sales@nohau.com

Tel: (888) 886-6428

Tel: (408) 866-1820

Fax: (408) 378-7869

Web: www.nohau.com

NOHAU